



**Application for Permanent Spacing Unit
Application for Compulsory Pooling**

**Rowin 17-8 #2H, #3H & #4H
All of Sections 5, 8 & 17 - T26N - R59E
Richland & Roosevelt County, Montana**

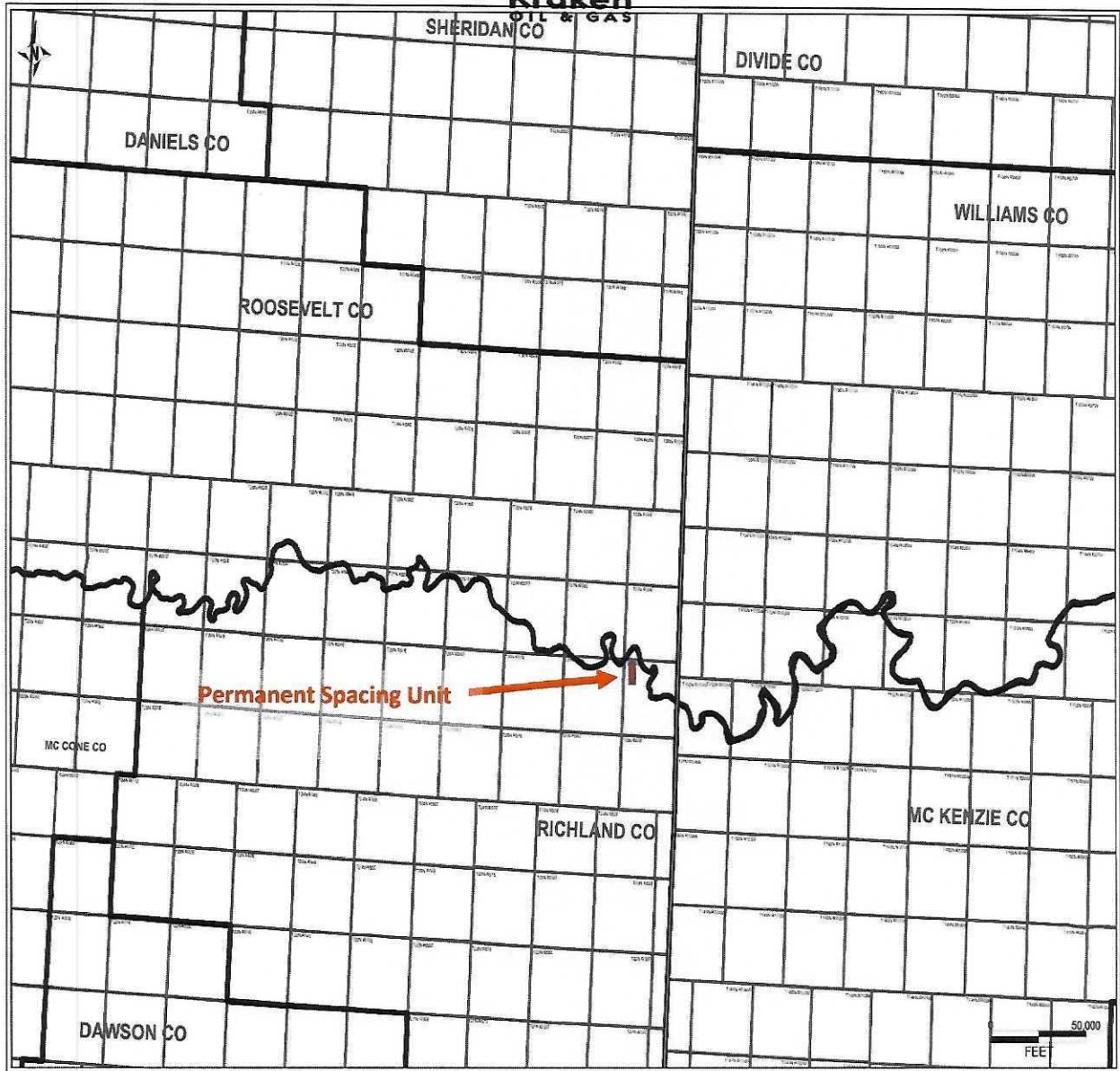
**Department of Natural Resources
And Conservation
Board of Oil & Gas Conservation
Of the State of Montana
Docket No. 15-2021 & Docket No. 16-2021
April 8th, 2021**



Docket No. 15-2021 & Docket No. 16-2021

TABLE OF CONTENTS

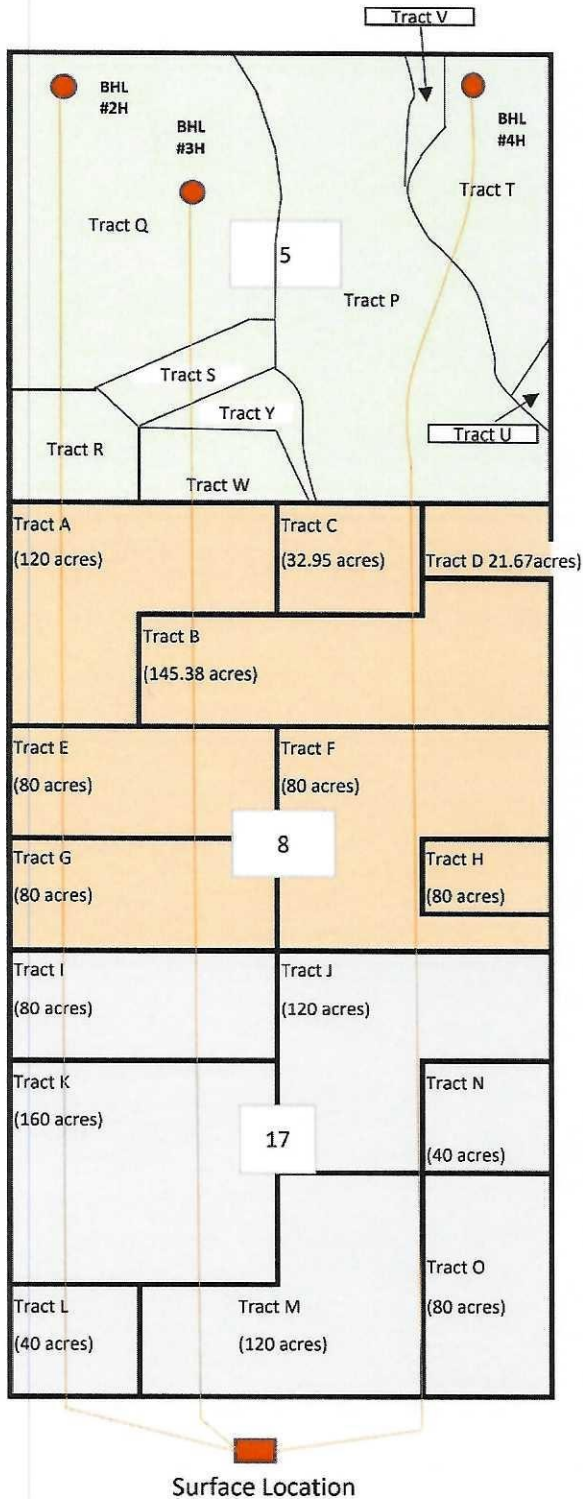
<u>DESCRIPTION</u>	<u>EXHIBIT NO.</u>
Regional Location Map	L-1
Tract Map	L-2 - L-3
Ownership Schedule	L-4 - L-6
Middle Bakken Reservoir Structure Map	G-1
Middle Bakken Reservoir Isopach Map	G-2
Type Log	G-3
Wellbore Diagram	E-1 - E-3
Well Plat	E-4 - E-6
Reserves and Economic Analysis	E-7
Production Profile	E-8 - E10



Regional Locator Map
Permanent Spacing Unit
T26N-R59E-Sections 5, 8 & 17
Richland & Roosevelt County, Montana



T26N-R59E-5, 8 & 17
 Richland & Roosevelt County, Montana



Working Interest Summary

Kraken Oil & Gas LLC	63.0191%
Edward Marily Ervin	0.0257%
BAR 2, LLC	0.0601%
Roger A. Clark	0.0064%
Equinor Energy	3.1665%
Northern Oil and Gas, Inc.	6.9849%
Lime Rock Resources IV-A	14.1175%
James & Roberta Lotspeich	0.0064%
Boedecker Resources Inc.	0.0216%
W Energy Operating, LLC	1.1280%
Bison Oil & Gas III, LLC	3.9373%
State of Montana	0.3725%
United States of America	0.2322%
ABOCO Investments, LLC	0.4223%
Craig A. Slawson 2014 Rev Trust	0.1354%
Dance Creek, LLC	0.8729%
James & Linda Robbins	0.0193%
Kuhn Oil Company, Inc.	1.1452%
Chesapeak Permian Corp.	0.0906%
Oasis Petroleum	0.1081%
Steel Holdings, Inc.	1.9654%
EOG Resources, Inc.	2.1624%
	100.000%

 Non-Consent



T26N-R59E-5, 8 & 17
Richland & Roosevelt County, Montana

Recapitulation

<u>Tract #</u>	<u>Acres</u>	<u>% in CA</u>
Tract A (FEE)	120.0000	6.25%
Tract B (FEE)	145.3800	7.57%
Tract C (FED)	32.9500	1.71%
Tract D (STATE)	21.6700	1.13%
Tract E (FEE)	80.0000	4.16%
Tract F (FEE)	80.0000	4.16%
Tract G (FEE)	80.0000	4.16%
Tract H (FED/FEE)	80.0000	4.16%
Tract I (FEE)	80.0000	4.16%
Tract J (FED/ FEE)	120.0000	6.25%
Tract K (FEE)	160.0000	8.33%
Tract L (FED)	40.0000	2.08%
Tract M (FEE)	120.0000	6.25%
Tract N (FEE)	40.0000	2.08%
Tract O (FEE)	80.0000	4.16%
Tract P (FEE)	249.2160	12.97%
Tract Q (FEE)	207.8350	10.82%
Tract R (FEE)	38.0150	1.98%
Tract S (FEE)	17.3880	0.90%
Tract T (FEE)	79.1430	4.12%
Tract U (FEE)	5.5500	0.29%
Tract V (FEE)	4.4620	0.23%
Tract W (FEE)	28.5400	1.49%
Tract X (FEE)	2.1400	0.11%
Tract Y (FEE)	9.1070	0.47%
	1921.396	100.00%



Ownership Schedule
T26N-R59E- Sections 5, 8 & 17
Richland & Roosevelt County, Montana

Tract A (120.00 Acres)

Mineral and Royalty Owners

G. William Hurley Rev. Trust
RIP 3
Saxet Minerals
Boedecker Resources, Inc.
Johnson Family, LLC
William and Linda Brewer JT
Timothy Smith
LMAC, LLC

David B. McAdoo
Dance Creek, LLC

Working Interest Owners

Kraken Oil & Gas, LLC
Limerock Resources IV-A, L.P.
ABOCO Investments, LLC
Dance Creek, LLC

Tract D (21.67Acres)

Mineral and Royalty Owners

State of Montana
Stewart Geological

Working Interest Owners

W Energy Operating, LLC

Tract G (80.00 Acres)

Mineral and Royalty Owners

G. William Hurley Rev. Trust
RIP 3
Saxet Minerals
Boedecker Resources, Inc.
Johnson Family, LLC
William and Linda Brewer JT
Timothy Smith

Working Interest Owners

Kraken Oil & Gas, LLC

Tract B (145.38 Acres)

Mineral and Royalty Owners

Tammy V. Sponheim
Sherry L. Weimer
Phillip J. Burgess
Terence L. Burgess
Steven B. Burgess
LMAC, LLC
David B. McAdoo
Dance Creek, LLC

Working Interest Owners

Limerock Resources IV-A, L.P.
ABOCO Investments, LLC
Dance Creek, LLC

Tract E (80 Acres)

Mineral and Royalty Owners

Tammy V. Sponheim
Sherry L. Weimer
Phillip J. Burgess
Terence L. Burgess
Steven B. Burgess
Working Interest Owners
Kraken Oil & Gas, LLC

Tract C (32.95 Acres)

Mineral and Royalty Owners

United States of America
LMAC, LLC
David B. McAdoo
Dance Creek, LLC
Working Interest Owners
Limerock Resources IV-A, L.P.
ABOCO Investments, LLC
Dance Creek, LLC

Tract F (80 Acres)

Mineral and Royalty Owners

United States of America
Bonnie C. Berry
John Berry
Bessie M. Rogers
DLG Energy, LLC
Cottonwood Creek Resources, LLC
Silver Spur Resources, LLC
Thomas A. Morgan
Wanda Morgan Trust
Charlie Lyndes
Billie M. Goggin
Barnett R/E Ventures, LLC
Fortin Enterprises, Inc.
Hancock Enterprises
Anne H. Livet

Daniele Alexander
Jimmy Lee Alexander
Jasmine Properties, LLC
Carolyn Dutzi
Curtis Bennett
Elizabeth Mertz
Paul Bennett
Marilyn Bennett Alexander
Wildcat Investments Corp.
Flying Wolf Enterprises
Brehm Investment Group
Alameda Energy, Inc.
Moon Royalty, LLC
Curtis Kuhn
Brian E. Blome
KLP Oil and Gas Properties
John Ashby, Jr.
Slawson Exploration Company
David Lesiuk
Michael Kernan
M.L. Adler
Judy Clifton Rev Trust

Tract F (80 Acres) Cont.

Working Interest Owners

Limerock Resources IV-A, L.P.
Steel Holdings, Inc.
BAR 2, LLC
Kraken Oil & Gas, LLC
Chesapeake Exploration, LLC
Edward & Marilyn Ervin
Roger A. Clark
James & Linda Robbins
James & Roberta Lotspeich
Craig A. Slawson Rev Trust
Northern Oil and Gas, Inc.
Equinor Energy LP

Tract H (80.00 Acres)

Mineral and Royalty Owners

Tammy V. Sponheim
Sherry L. Weimer
Phillip J. Burgess
Terence L. Burgess
Steven B. Burgess
John L. Law
Brian E. Blome
KLP Oil and Gas Properties
John Ashby, Jr.
Slawson Exploration Company
Moon Royalty, LLC
Working Interest Owners
Kraken Oil & Gas, LLC
Limerock Resources IV-A, L.P.
Bar 2, LLC
Craig A. Slawson Rev Trust
Northern Oil & Gas, Inc.
Steel Holdings, Inc.



Ownership Schedule Cont'd
T26N-R59E- Sections 5, 8 & 17
Richland & Roosevelt County, Montana

Tract I (80.00 Acres)

Mineral and Royalty Owners

Tammy V. Sponheim
Sherry L. Weimer
Phillip Burgess
Terence L. Burgess
Steven B. Burgess
Murton Mortgage Co.
Missouri Basin Well Service
Stewart Geological
Kevin F. Kurth
Brian P. Kurth
Paris Land Company
Green Wing Royalty, LLC

Working Interest Owners

Kraken Oil & Gas, LLC
Equinor Energy

Tract L (40.00 Acres)

Mineral and Royalty Owners

United States of America
Marshall & Winston, Inc.

Working Interest Owners

Kraken Oil & Gas, LLC

Tract M (120.00 Acres)

Mineral and Royalty Owners

Tammy V. Sponheim
Sherry L. Weimer
Phillip Burgess
Terence L. Burgess
Steven B. Burgess
Murton Mortgage Co.
Missouri Basin Well Service
Stewart Geological
Kevin F. Kurth
Brian P. Kurth
Paris Land Company
Green Wing Royalty, LLC

Working Interest Owners

Kraken Oil & Gas, LLC
Equinor Energy

Tract J (120.00 Acres)

Mineral and Royalty Owners

United States of America
John Dale Berry
Bonnie C. Berry
Bessie M. Rogers
Silver Spur Resources, LLC
DLG Energy, LLC
Thomas A. Morgan
Cottonwood Creek Resources LLC

Barnett R/E Ventures LLC

Charlie Lyndes

Billie M. Goggin

Anne H. Livet

Daniele Alexander

Jimmy Lee Alexander

Fortin Enterprises, Inc.

Hancock Enterprises

Jasmine Properties, LLC

Carolyn Dutzi

Curtis Bennett

Eliabeth Mertz

Paul Bennet

Marilyn Bennett Alexander

Wildcat Investments Corp

Flying Wolf Enterprises, Inc.

Brehm Investment Group, Inc.

Wanda Morgan Trust

Jack & Mary King

M.L. Adler

Donald C. Slawson

Brian & Renita Nieuwenhuis

Judy Pate Clifton Rev. Trust

Working Interest Owners

Kraken Oil & Gas, LLC

Northern Oil and Gas, Inc.

Equinor Energy

Kuhn Oil Co. Inc.

Edward and Marilyn Ervin

James L and Roberta Lotsspeich

James L. and Linda Robbins.

Craig A. Slawson Rev. Trust

Roger A. Clark

Tract K (160.00 Acres)

Mineral and Royalty Owners

Tammy V. Sponheim
Sherry L. Weimer
Phillip Burgess
Terence L. Burgess
Steven B. Burgess
Missouri Basin Well Service
Stewart Geological

Kevin F. Kurth

Brian P. Kurth

Paris Land Company

Green Wing Royalty, LLC

Working Interest Owners

Kraken Oil & Gas, LLC

Equinor Energy

Tract N (40 Acres)

Mineral and Royalty Owners

John Dale Berry

Bonnie C. Berry

Bessie M. Rogers

Silver Spur Resources, LLC

DLG Energy, LLC

Thomas A. Morgan

Cottonwood Creek Resources LLC

Barnett R/E Ventures LLC

Charlie Lyndes

Billie M. Goggin

Wanda Morgan Trust

Donald C. Slawson

Brian & Renita Nieuwenhuis

Working Interest Owners

Kraken Oil & Gas, LLC

Edward and Marilyn Ervin

James L and Roberta Lotsspeich

James L. and Linda Robbins.

Craig A. Slawson Rev. Trust

Roger A. Clark

Kuhn Oil Co. Inc.

Northern Oil & Gas, Inc.

Bar 2, LLC

Tract O (80 Acres)

Mineral and Royalty Owners

Benjamin Merinals, Inc.
John Dale Berry
Bonnie C. Berry
Bessie M. Rogers
Silver Spur Resources, LLC
DLG Energy, LLC
Thomas A. Morgan
Cottonwood Creek Resources LLC

Barnett R/E Ventures LLC

Charlie Lyndes

Billie M. Goggin

Anne H. Livet

Daniele Alexander

Jimmy Lee Alexander

Fortin Enterprises, Inc.

Hancock Enterprises

Jasmine Properties, LLC

Carolyn Dutzi

Curtis Bennett

Eliabeth Mertz

Paul Bennet

Marilyn Bennett Alexander

Wildcat Investments Corp

Flying Wolf Enterprises, Inc.

Brehm Investment Group, Inc.

Wanda Morgan Trust

Jack & Mary King

M.L. Adler Red Crown Royalties, LLC

Donald C. Slawson

Brian & Renita Nieuwenhuis

Frase-Tucker Resources, LLC

Working Interest Owners

Kraken Oil & Gas, LLC

Northern Oil and Gas, Inc.

Equinor Energy

Kuhn Oil Co. Inc.

Edward and Marilyn Ervin

James L and Roberta Lotsspeich

James L. and Linda Robbins.

Craig A. Slawson Rev. Trust

Roger A. Clark



Ownership Schedule Cont'd
T26N-R59E- Sections 5, 8 & 17
Richland & Roosevelt County, Montana

Tract P (249.216 Acres)

Mineral and Royalty Owners

State of Montana

Brian & Renita Nieuwenhuis

Working Interest Owners

Kraken Oil & Gas, LLC

Tract Q (207.835 Acres)

Mineral and Royalty Owners

Hardy Mineral Partnership

John W. Borg

Marlene Borg Senner

Working Interest Owners

Kraken Oil & Gas, LLC

Bison Oil and Gas III, LLC

Tract R (38.015 Acres)

Mineral and Royalty Owners

G. William Hurley Rev Trust

Saxet II Minerals, LLC

RIP 3, LP

Boedecker Resources, Inc.

Johnston Family, LLC

William & Linda Brewer

Timothy L. Smith

Working Interest Owners

Kraken Oil & Gas, LLC

EOG Resources, Inc.

Bison Oil and Gas III, LLC

Boedecker Resources

Tract S (17.388 Acres)

Mineral and Royalty Owners

G. William Hurley Rev Trust

Saxet II Minerals, LLC

RIP 3, LP

Boedecker Resources, Inc.

Johnston Family, LLC

William & Linda Brewer

Timothy L. Smith

Working Interest Owners

Kraken Oil & Gas, LLC

EOG Resources, Inc.

Boedecker Resources, Inc.

Tract T (79.143 Acres)

Mineral and Royalty Owners

Wilson Scott & Renee Berry

Audrey Berry

Working Interest Owners

Kraken Oil & Gas, LLC

Bison Oil and Gas III, LLC

Tract U (5.55 Acres)

Mineral and Royalty Owners

United States of America

Working Interest Owners

Kraken Oil & Gas, LLC

Bison Oil and Gas III, LLC

Tract V (4.462 Acres)

Mineral and Royalty Owners

United States of America

Working Interest Owners

United States of America

Tract W (28.54 Acres)

Mineral and Royalty Owners

United States of America

Marshall & Winston, Inc.

Working Interest Owners

Kraken Oil and Gas, LLC

Tract X (2.14 Acres)

Mineral and Royalty Owners

United States of America

Dance Creek, LLC

LMAC, LLC

David B. McAdoo

Working Interest Owners

Oasis Petroleum North America

ABOCO Investments

Tract Y (9.107 Acres)

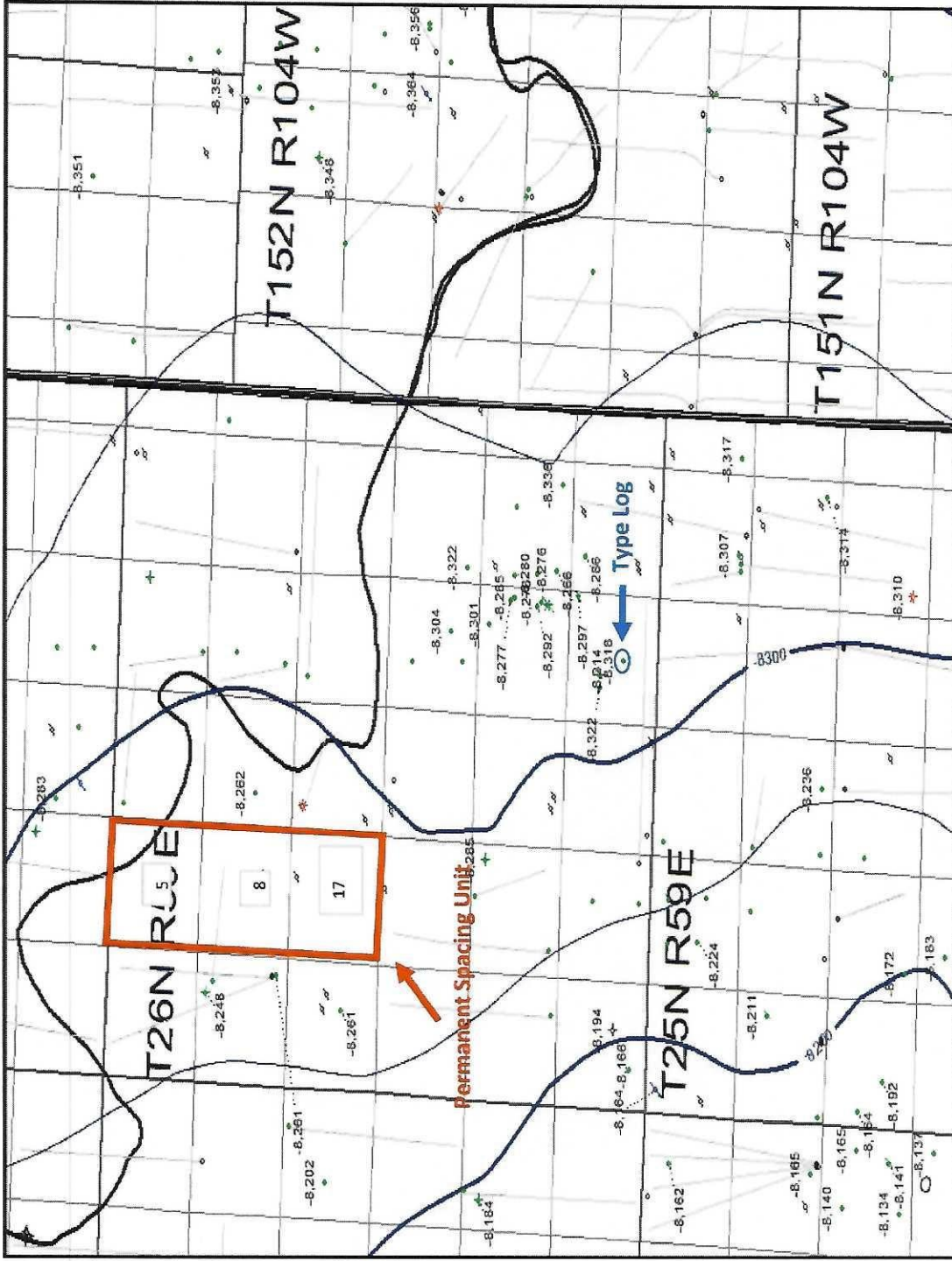
Mineral and Royalty Owners

United States of America

State of Montana

Working Interest Owners

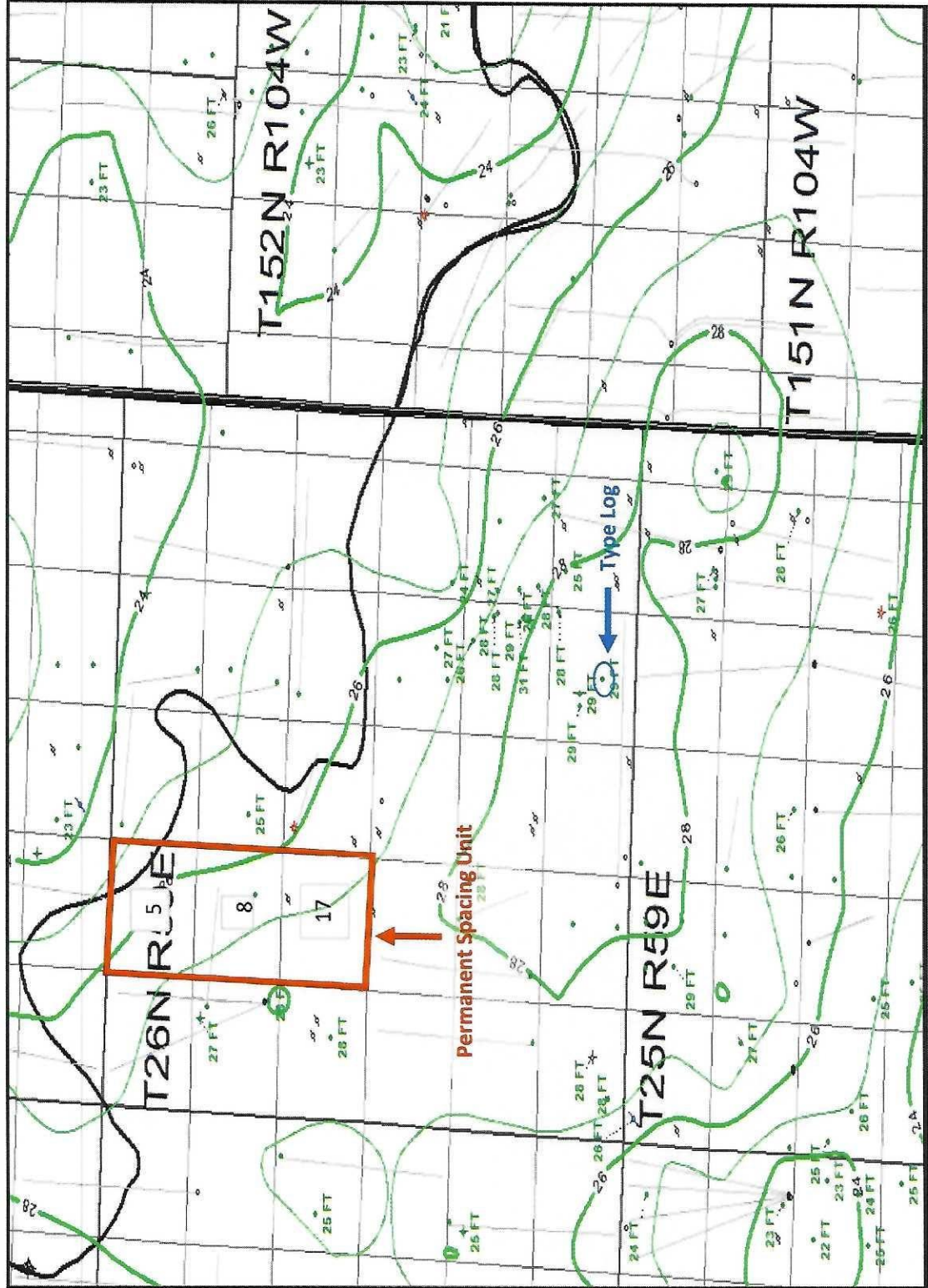
Kraken Oil & Gas, LLC



Top of Upper Bakken Shale Structure

T26N-R59E-Sections 5, 8 & 17

Richland & Roosevelt County, Montana

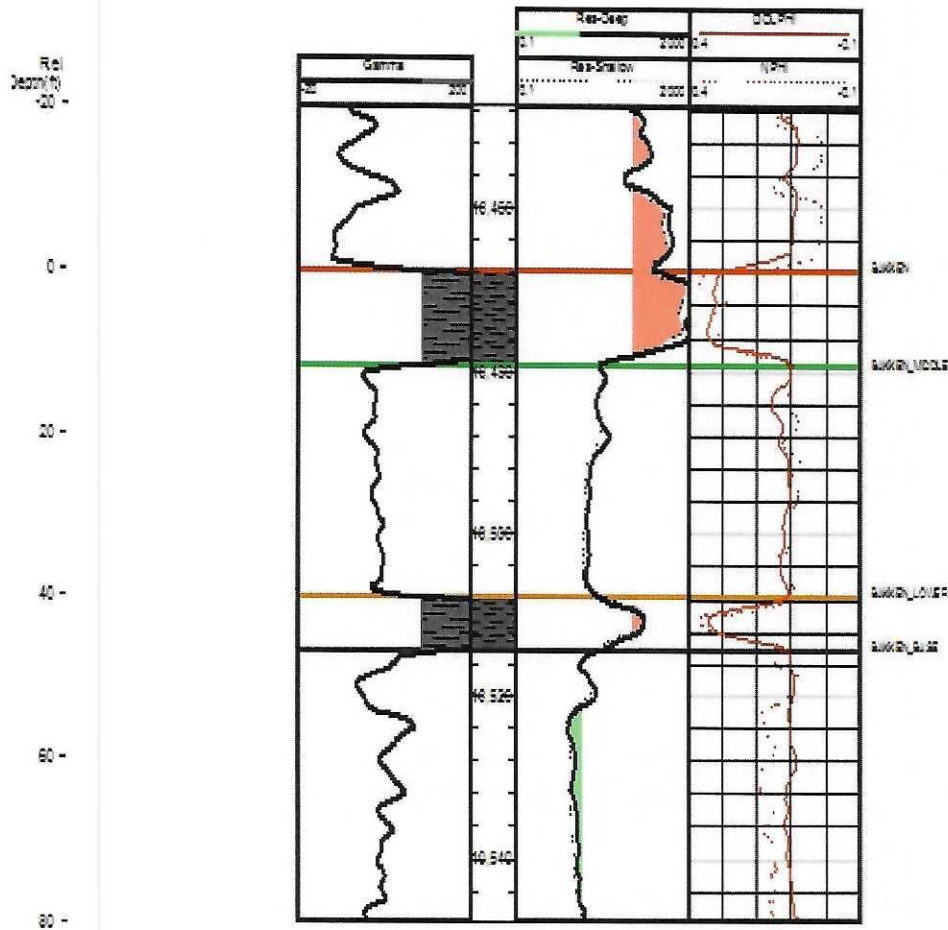


Middle Bakken Gross Isopach
 T26N-R59E-Sections 5, 8 & 17
 Richland & Roosevelt County, Montana



250832185000
NOHLY

CONTINENTAL RESOURCES
NOTEBOOM #1-34
RICHLAND
T26N R59E S34



Type Log - Bakken Section
Permanent Spacing Unit
T26N-R59E- Sections 5, 8 & 17
Richland & Roosevelt County, Montana



Kraken Oil & Gas, LLC
Rowin 17-5 #2H
 Section 20, Township 26N Range 59E NENW 325' FNL x 2.270' FWL
 Middle Bakken
 Elm Coulee, NE in Richland County, Montana
 25-083-23397

11/2/2020

WELLBORE SCHEMATIC



ELEV. 2029' CL
 RWB = 26'

Conductor
 16" 54,008, J-46
 set of 87 MD
 20' hole
 Cemented to surface

Surface Casing
 LTC
 5/8" 360 J-55
 5/8" 360 J-55
 5/8" 360 J-55
 5/8" 360 J-55
 5/8" 360 J-55
 5/8" 360 J-55
 5/8" 360 J-55

Intermediate Casing
 7" 528 HCP-110 BTC
 7" 528 HCP-110 BTC
 7" 528 HCP-110 BTC
 7" 528 HCP-110 BTC
 7" 528 HCP-110 BTC
 7" 528 HCP-110 BTC

Liner
 Top of PBR at
 Packer
 Hanger
 4-1/2" 13.5# HCP-110, DWCC
 4-1/2" 13.5# HCP-110, BTC

Top Bottom
 26.00' 2,020.75'
 2,020.75' 2,021.70'
 2,021.70' 2,063.14'
 2,063.14' 2,064.58'

Top Bottom
 26.00' 10,729.32'
 10,729.32' 10,730.65'
 10,730.65' 10,772.65'
 10,772.65' 10,774.44'

Top Bottom
 9,937.62' 9,952.62'
 9,952.62' 9,963.94'
 9,963.94' 9,969.30'
 9,969.30' 10,010.25'
 10,010.25' 10,050.98'
 10,050.98' 10,092.39'
 10,092.39' 10,133.83'
 10,133.83' 10,175.27'
 10,175.27' 10,216.72'
 10,216.72' 10,257.33'

Component	Jts	Size	Wght	Grade	Conn	Length	Top	Botm
KB						26		26
Tubing	1	2.875"	6.5#	L-80	EUE	33.13	26	59
Pup Jnts	2	2.875"	6.5#	L-80	EUE	16.14	59	77
Tubing	296	2.875"	6.5#	L-80	EUE	9790.91	77	9,868
X-Nipple	1	3.7"			EUE	1.12	9,868	9,869
Tubing	1	2.875"	6.5#	L-80	EUE	33.13	9,869	9,902
Crossover - BXP	1	3.66"			EUE	0.35	9,902	9,903
Tubing	3	2.375"	4.7#	L-80	EUE	97.61	9,903	10,001
X-Nipple	1	3.06"			EUE	0.94	10,001	10,002
Tubing	1	2.375"	4.7#	L-80	EUE	32.59	10,002	10,034
On/Off Tool	1	3.75"			EUE	1.44	10,034	10,036
Seal lug Nipple	1	1.87x			T2/EUE	1.18	10,036	10,037
AS1-X Packer	1	3.75			EUE	6.18	10,037	10,043
Pup joint	1	2.375	4.7	L80	EUE	3.97	10,043	10,047
Pump out plug	1	2" ID after blown			EUE	0.4	10,047	10,047

Description	Length	Top Depth, RKB	Botm Depth, RKB
15 ft PBR with LT Packer	15.00	9,937.62	9,952.62
Nine Energy Liner Top Packer	1.30	9,952.62	9,953.94
Nine Energy Liner Top Hanger/Pup Jt	15.36	9,963.94	9,969.30
4-1/2" 13.5# P-110, DWCC Casing	40.99	9,969.30	10,010.29
4-1/2" 13.5# P-110, DWCC Casing	40.69	10,010.25	10,050.98
4-1/2" 13.5# P-110, DWCC Casing	41.41	10,050.98	10,092.39
4-1/2" 13.5# P-110, DWCC Casing	41.44	10,092.39	10,133.83
4-1/2" 13.5# P-110, DWCC Casing	41.44	10,133.83	10,175.27
4-1/2" 13.5# P-110, DWCC Casing	41.45	10,175.27	10,216.72
4-1/2" 13.5# P-110, DWCC Casing	40.61	10,216.72	10,257.33

TO = 26,120'
 TVD = 10,332'

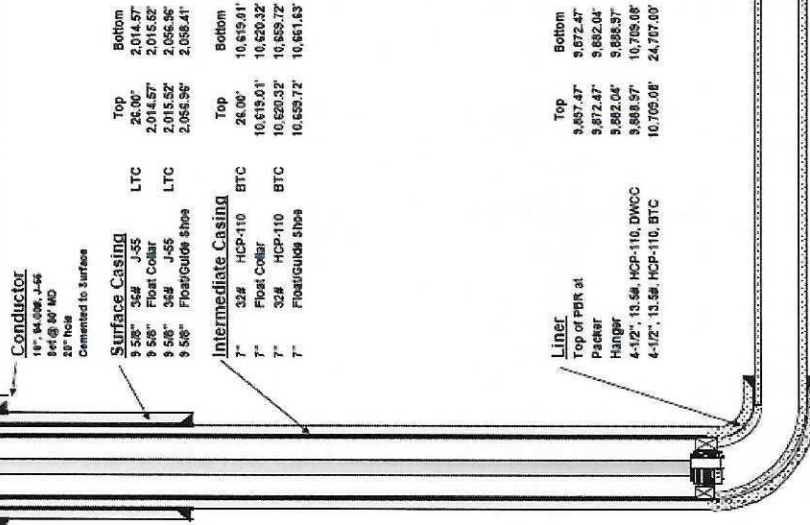


2/8/2021

Kraken Oil & Gas, LLC
 Rowin 17-5 #3H
 Middle Bakken
 Section 20, Township 26N Range 59E NEMW 325' FNL x 2.303' FWL
 Elm Coulee, NE in Richland County, Montana
 25-083-23398

WELLBORE SCHEMATIC

ELEV: 2,029' OL
 RWD = 26'



Component	Units	Size	Wght	Grade	Conn	Length	Top	Botm
KB						26	26	23
Compression						-3.25	26	23
Tubing	1	2.875	6.5#	L80	EUE	33.1	23	56
TUBING SUBS	1	2.875	6.5#	L80	EUE	2.08	56	58
Tubing	295	2.875	6.5#	L80	EUE	9731.95	56	9790
2.315" X nipple	1	3.7			EUE	1.12	9790	9791
Tubing	1	2.375"	6.5#	L80	EUE	33.17	9791	9824
XO 2 3/8 x 2 7/8	1	3.68			EUE	0.42	9824	9825
TUBING	3	2.375	4.7#	L80	EUE	97.8	9825	9922
1.57" X nipple	1	3.07			EUE	0.93	9922	9923
Tubing	1	2.375	4.7#	L80	EUE	32.55	9923	9956
T2	1	3.75			EUE	1.31	9956	9957
Seal ing Nipple	1	1.87x				1.18	9957	9958
AS1-X Packer	1	3.75				6.18	9958	9965
Pup joint	1	2.375	4.7#	L80	EUE	4.00	9965	9969
Pump out plug	1	2" ID after blown				0.40	9969	9968

Description	Length	Top Depth, RKB	Botm Depth, RKB
15 1/8 PBR with LT Packer	15.00	9,857.47	9,872.47
New Energy Liner Top Packer	1.35	9,872.47	9,873.79
New Energy Liner Top Hanger/Pup J	15.18	9,873.79	9,888.97
4-1/2", 13.5# P-110 DWCC Casing	41.03	9,888.97	9,930.00
4-1/2", 13.5# P-110 DWCC Casing	41.04	9,930.00	9,971.04
4-1/2", 13.5# P-110 DWCC Casing	41.40	9,971.04	10,012.44
4-1/2", 13.5# P-110 DWCC Casing	40.62	10,012.44	10,053.06
4-1/2", 13.5# P-110 DWCC Casing	41.47	10,053.06	10,094.53
4-1/2", 13.5# P-110 DWCC Casing	40.62	10,094.53	10,135.15
4-1/2", 13.5# P-110 DWCC Casing	41.03	10,135.15	10,176.18

TD = 24760'
 TVD = 10,327'

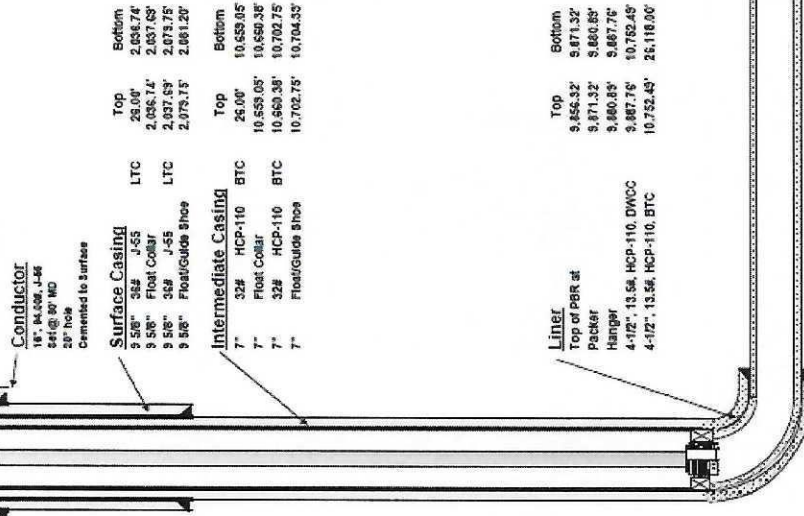


2/8/2021

Kraken Oil & Gas, LLC
 Rowin 17-5 #4H
 Section 20, Township 26N Range 59E MENW 325 FNL x 2.336' FWL
 Middle Bakken
 Elm Coulee, NE in Richland County, Montana
 25-083-23399

WELLBORE SCHEMATIC

ELEV. 2,009.0L
 200 = 26'

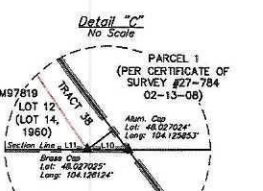
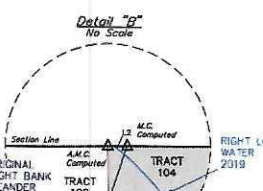
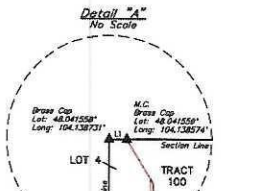
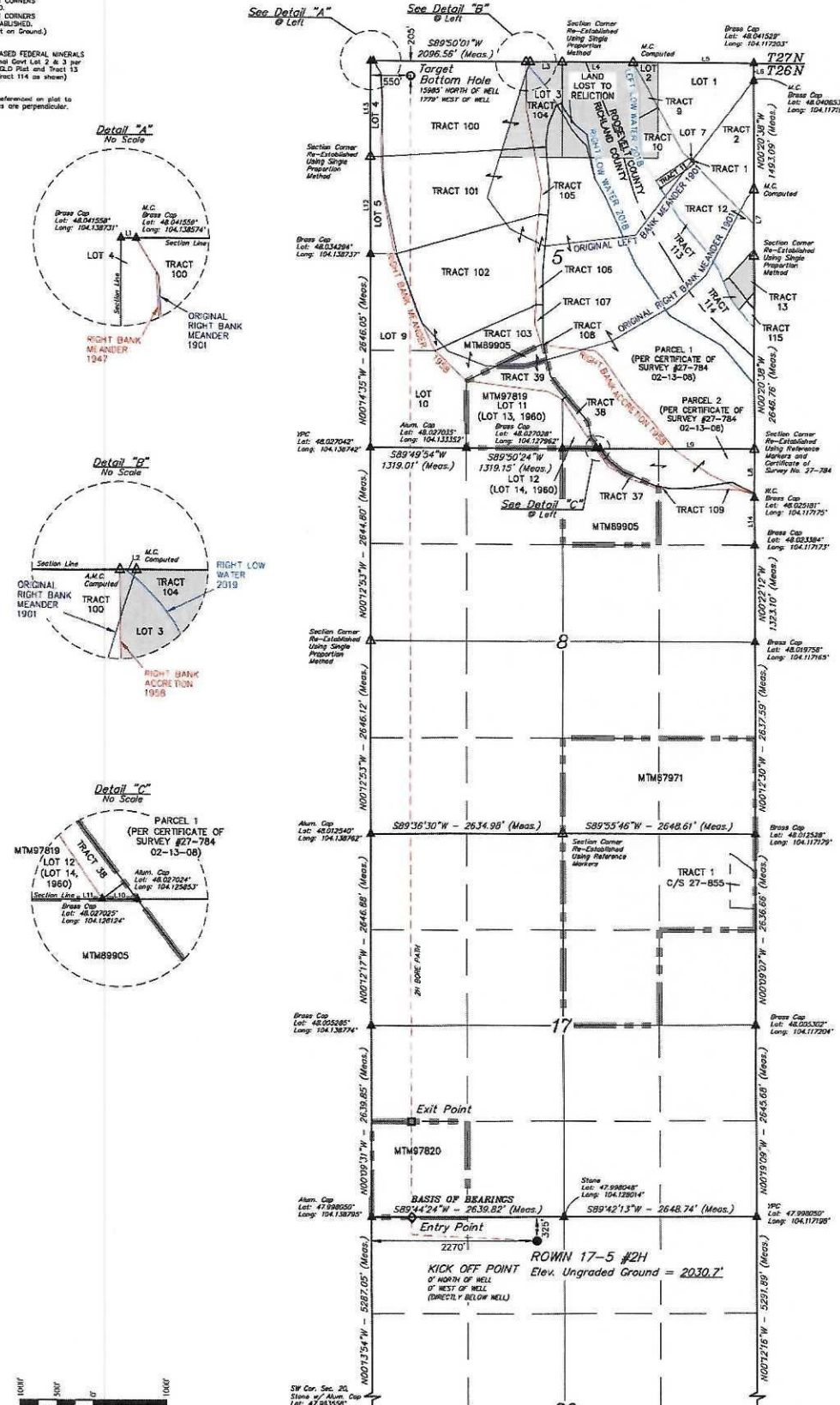


Component	Jts	Size	Wght	Grade	Conn	Length	Top	Botm
KB						26	26	26
Compression						-3.25	26	23
Production Tubing	1	2.875	6.5	L-80	EUE	33.1	23	56
Tubing Subs	1	2.875	6.5	L-80	EUE	10.07	56	66
Production Tubing	294	2.875	6.5	L-80	EUE	9725.03	66	9,791
2 3/13 X-Nipple	1	2.875		EUE	EUE	1.12	9,791	9,792
Production Tubing	1	2.875	6.5	L-80	EUE	33.08	9,792	9,825
Crossover	1	2.875		EUE	EUE	0.42	9,825	9,826
Production Tubing	3	2.375	4.7	L-80	EUE	97.74	9,826	9,923
1.875 X-Nipple	1	2.375		EUE	EUE	0.95	9,923	9,924
Production Tubing	1	2.375	4.7	L-80	EUE	32.59	9,924	9,957
T-2	1	3.75		EUE/T-2	EUE	1.34	9,957	9,958
Seal lug Nipple	1	1.87X		T2/EUE	EUE	1.18	9,958	9,959
AS1-X Packer	1	3.75		EUE	EUE	6.18	9,959	9,966
Tubing Sub	1	2.375	4.7	L-80	EUE	4	9,966	9,970
Pump Out Plug	1	2" ID after blown		EUE	EUE	0.4	9,970	9,970

Description	Length	Top Depth, RKB	Botm Depth, RKB
15 ft PBR with LT Packer	15.00	9,856.32	9,871.32
Nine Entry Liner Top Packer	1.31	9,871.32	9,872.63
Nine Entry Liner Top Hanger/Plug J	15.13	9,872.63	9,887.76
4-1/2", 13.5#, P-110, DWCC Casing	41.41	9,887.76	9,929.17
4-1/2", 13.5#, P-110, DWCC Casing	41.41	9,929.17	9,970.58
4-1/2", 13.5#, P-110, DWCC Casing	41.21	9,970.58	10,011.79
4-1/2", 13.5#, P-110, DWCC Casing	41.46	10,011.79	10,053.25
4-1/2", 13.5#, P-110, DWCC Casing	41.45	10,053.25	10,094.70
4-1/2", 13.5#, P-110, DWCC Casing	41.46	10,094.70	10,136.16
4-1/2", 13.5#, P-110, DWCC Casing	41.41	10,136.16	10,177.57

TD = 26,143'
 TVD = 12,343'

- LEGEND:**
- = PROPOSED WELLHEAD
 - = TARGET BOTTOM HOLE
 - ◇ = FEDERAL MINERALS ENTRY POINT
 - = FEDERAL MINERALS EXIT POINT
 - = FEDERAL MINERALS
 - ▲ = SECTION CORNERS LOCATED
 - △ = SECTION CORNERS RE-ESTABLISHED (Not Set on Ground)
 - = UNLEASED FEDERAL MINERALS (Original Govt Lot 2 & 3 per 1901 G.L. Plat and Tract 13 and Tract 114 as shown)
- NOTE:**
Distances referenced on plat to section lines are perpendicular.



LINE	DIRECTION	LENGTH
L1	S89°50'01"W	38.48'
L2	S89°50'01"W	58.73'
L3	S89°50'01"W	439.72'
L4	S89°50'32"W	974.49'
L5	S89°50'32"W	1316.77'
L6	S00°31'30"E	246.69'
L7	N00°20'30"W	819.07'
L8	N00°20'10"W	681.50'
L9	S89°51'10"W	2123.08'
L10	N89°50'50"W	68.62'
L11	S89°51'37"W	448.63'
L12	N00°14'08"W	1322.45'
L13	N00°14'08"W	1327.74'
L14	N00°20'10"W	635.40'



NAD 83 (SURFACE LOCATION)	NAD 83 (KICK OFF POINT)	NAD 83 (ENTRY POINT)	NAD 83 (EXIT POINT)	NAD 83 (TARGET BOTTOM HOLE)
LATITUDE = 47°49'26.76" (47 90715)	LATITUDE = 47°59'40.76" (47 90715)	LATITUDE = 47°59'25.98" (47 90849)	LATITUDE = 48°00'00.00" (48 00 000)	LATITUDE = 48°02'27.57" (48 02099)
LONGITUDE = 104°46'26.29" (104 12925)	LONGITUDE = 104°46'26.29" (104 12925)	LONGITUDE = 104°46'11.57" (104 13044)	LONGITUDE = 104°46'11.57" (104 13044)	LONGITUDE = 104°46'11.57" (104 13044)
NAD 27 (SURFACE LOCATION)	NAD 27 (KICK OFF POINT)	NAD 27 (ENTRY POINT)	NAD 27 (EXIT POINT)	NAD 27 (TARGET BOTTOM HOLE)
LATITUDE = 47°59'26.69" (47 90715)	LATITUDE = 47°59'40.69" (47 90715)	LATITUDE = 47°59'25.91" (47 90810)	LATITUDE = 48°00'00.00" (48 00 000)	LATITUDE = 48°02'27.50" (48 02099)
LONGITUDE = 104°46'24.57" (104 12903)	LONGITUDE = 104°46'24.57" (104 12903)	LONGITUDE = 104°46'09.79" (104 13043)	LONGITUDE = 104°46'09.77" (104 13043)	LONGITUDE = 104°46'09.77" (104 13043)
STATE PLANE NAD 83 (MONTANA)	STATE PLANE NAD 83 (MONTANA)	STATE PLANE NAD 83 (MONTANA)	STATE PLANE NAD 83 (MONTANA)	STATE PLANE NAD 83 (MONTANA)
N: 4411129.7 E: 3281816.3	N: 4411129.7 E: 3281816.3	N: 4411240.7 E: 3280979.3	N: 441284.20 E: 327999.99	N: 442944.70 E: 3278104.3
STATE PLANE NAD 27 (MONTANA)	STATE PLANE NAD 27 (MONTANA)	STATE PLANE NAD 27 (MONTANA)	STATE PLANE NAD 27 (MONTANA)	STATE PLANE NAD 27 (MONTANA)
N: 3435788.1 E: 3314123.9	N: 3435788.1 E: 3314123.9	N: 3435918.1 E: 3313781.4	N: 3436008.0 E: 3313781.4	N: 3436148.0 E: 3313381.2

BASIS OF BEARINGS
BASIS OF BEARINGS IS A G.P.S. OBSERVATION

UELS, LLC
Corporate Office • 85 South 200 East
Vernal, UT 84078 • (435) 789-1817

CERTIFICATE
I HEREBY CERTIFY THAT THE ABOVE PLAT WAS PREPARED FROM FIELD NOTES AND MEASUREMENTS MADE BY ME OR UNDER MY SUPERVISION AND THAT THE SAME ARE TRUE AND CORRECT TO THE BEST OF MY KNOWLEDGE AND BELIEF.

Scott C. Kuster
06-16-20
REGISTERED LAND SURVEYOR
BEARING FROM NG 1983'S
SEAT OF MONTANA

REV 5 06-16-20 L.C. (ADD) FEDERAL MINERALS ADD ENTRY & EXIT POINTS

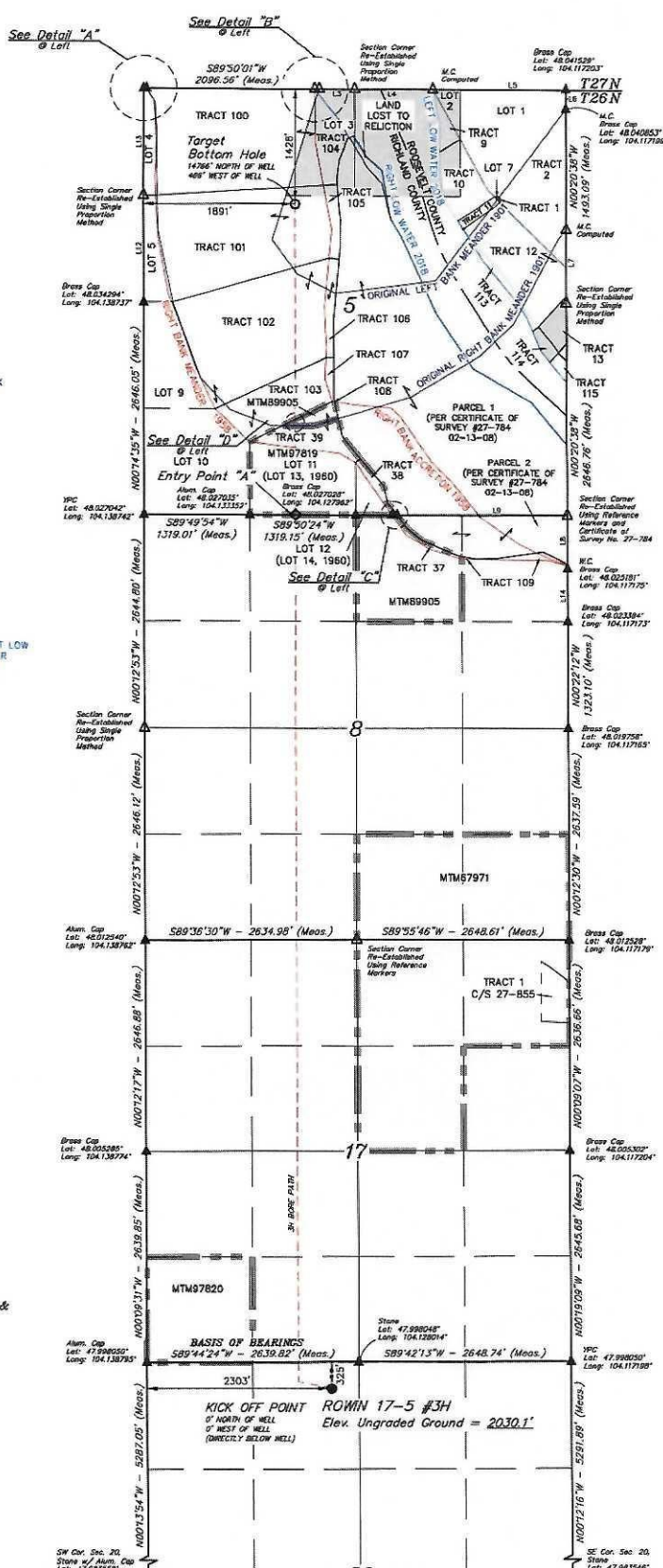
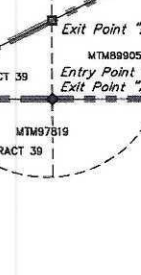
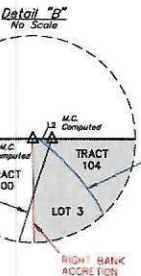
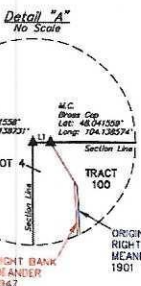
KRAKEN OPERATING, LLC

ROWEN 17-5 #2H
NE 1/4 NW 1/4, SECTION 26, T26N, R59E, P.M.M.
RICHLAND COUNTY, MONTANA

DESIGNED BY	JJ	08-28-18	SCALE
DRAWN BY	S.K.	08-19-18	1" = 1000'

WELL LOCATION PLAT

- LEGEND:**
- = PROPOSED WELLHEAD
 - = TARGET BOTTOM HOLE
 - ◇ = FEDERAL MINERALS ENTRY POINT
 - = FEDERAL MINERALS EXIT POINT
 - ▣ = FEDERAL MINERALS
 - ▲ = SECTION CORNERS LOCATED
 - △ = SECTION CORNERS RE-ESTABLISHED (Not Set on Ground)
 - = UNRELEASED FEDERAL MINERALS (Original Grant Lot 2 & 3 per 1951 G.L.O. Plat and Tract 15 and Tract 114 as shown)
- NOTE:**
Distances referenced on plot to section lines are approximate.



LINE	DIRECTION	LENGTH
L1	S89°50'01"W	38.49'
L2	S89°50'01"W	58.73'
L3	S89°50'01"W	439.72'
L4	S89°50'32"W	874.49'
L5	S89°50'32"W	1318.77'
L6	S00°31'58"E	248.69'
L7	N00°20'58"W	619.07'
L8	N00°20'10"W	681.50'
L9	S89°51'15"W	2123.02'
L10	N89°50'58"W	68.62'
L11	S89°51'37"W	448.63'
L12	N00°14'08"W	1322.45'
L13	N00°14'08"W	1322.74'
L14	N00°20'10"W	655.40'

NAD 83 SURFACE LOCATION	NAD 83 KICK OFF POINT	NAD 83 ENTRY POINT "A"	NAD 83 ENTRY POINT "C" & ENTRY POINT "B"	NAD 83 ENTRY POINT "B"	NAD 83 TARGET BOTTOM HOLE
LATITUDE - 47°59'48.76" (47°59'15")	LATITUDE - 47°59'49.76" (47°59'15")	LATITUDE - 48°01'57.52" (48°01'52")	LATITUDE - 48°01'49.87" (48°01'52")	LATITUDE - 48°01'49.87" (48°01'52")	LATITUDE - 48°02'13.47" (48°01'52")
LONGITUDE - 104°07'51.89" (104°12'59")	LONGITUDE - 104°07'51.89" (104°12'59")	LONGITUDE - 104°07'51.89" (104°12'59")	LONGITUDE - 104°07'51.89" (104°12'59")	LONGITUDE - 104°07'51.89" (104°12'59")	LONGITUDE - 104°07'51.89" (104°12'59")
NAD 83 ENTRY POINT "A"	NAD 83 ENTRY POINT "B"	NAD 83 ENTRY POINT "C"	NAD 83 ENTRY POINT "D"	NAD 83 ENTRY POINT "E"	NAD 83 ENTRY POINT "F"
LATITUDE - 47°59'49.69" (47°59'15")	LATITUDE - 47°59'49.69" (47°59'15")	LATITUDE - 48°01'57.52" (48°01'52")	LATITUDE - 48°01'49.87" (48°01'52")	LATITUDE - 48°01'49.87" (48°01'52")	LATITUDE - 48°02'13.47" (48°01'52")
LONGITUDE - 104°07'51.89" (104°12'59")	LONGITUDE - 104°07'51.89" (104°12'59")	LONGITUDE - 104°07'51.89" (104°12'59")	LONGITUDE - 104°07'51.89" (104°12'59")	LONGITUDE - 104°07'51.89" (104°12'59")	LONGITUDE - 104°07'51.89" (104°12'59")
STATE PLANE NAD 83 (CENTRAL)	STATE PLANE NAD 83 (CENTRAL)	STATE PLANE NAD 83 (CENTRAL)	STATE PLANE NAD 83 (CENTRAL)	STATE PLANE NAD 83 (CENTRAL)	STATE PLANE NAD 83 (CENTRAL)
N 141°11'54.1" E 320.8494'	N 141°11'54.1" E 320.8494'	N 141°11'54.1" E 320.8494'	N 141°11'54.1" E 320.8494'	N 141°11'54.1" E 320.8494'	N 141°11'54.1" E 320.8494'
N 341°59'31.1" E 1314.8453'	N 341°59'31.1" E 1314.8453'	N 341°59'31.1" E 1314.8453'	N 341°59'31.1" E 1314.8453'	N 341°59'31.1" E 1314.8453'	N 341°59'31.1" E 1314.8453'

BASIS OF BEARINGS
BASIS OF BEARINGS IS A G.P.S. OBSERVATION

UELS, LLC
Corporate Office • 85 South 200 East
Vernal, UT 84478 • (435) 789-1017

CERTIFICATE

I, the undersigned, being a duly qualified and licensed Professional Engineer in the State of Montana, do hereby certify that the above plat was prepared and filed in accordance with the laws of the State of Montana and that the same are true and correct to the best of my knowledge and belief.

[Signature]
Professional Engineer
06-16-20

RECORDED AND RETURNED TO THE REGISTERING ENGINEER'S OFFICE OF MONTANA

KRAKEN OPERATING, LLC

ROWIN 17-5 #3H
NE 1/4 NW 1/4, SECTION 39, T26N, R59E, P.M.M.
RICHLAND COUNTY, MONTANA

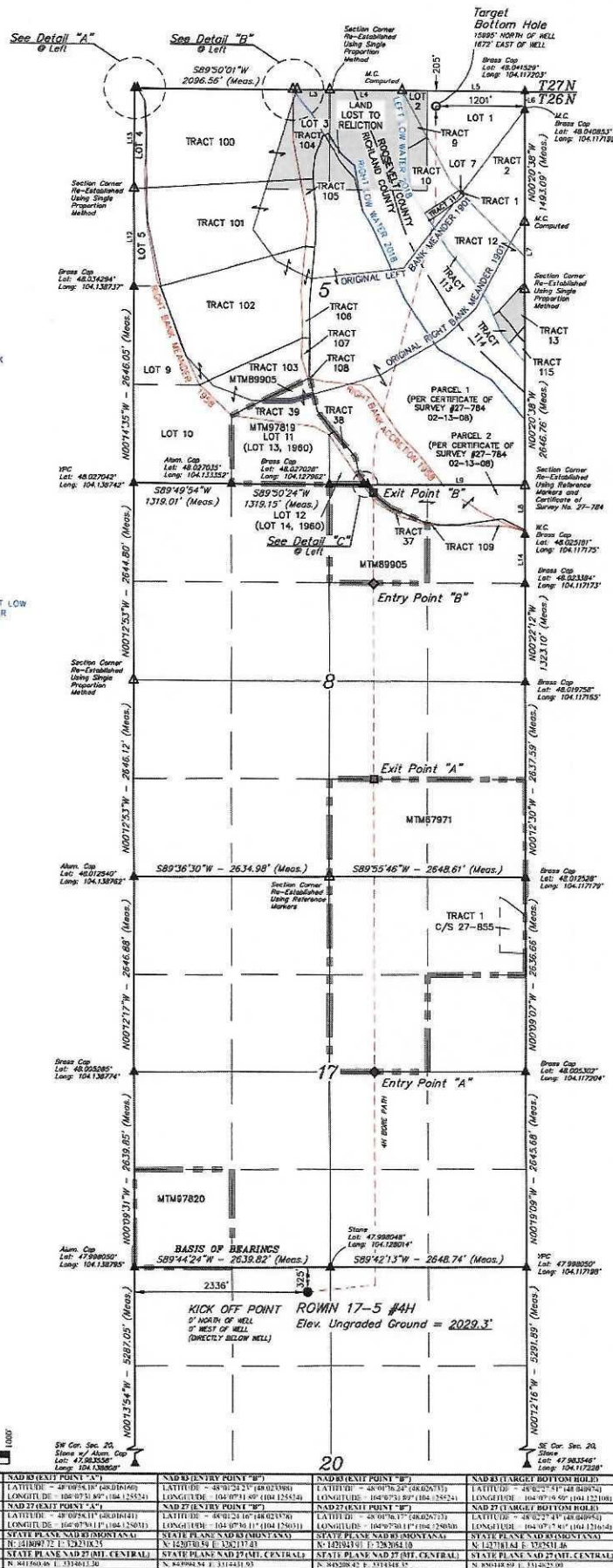
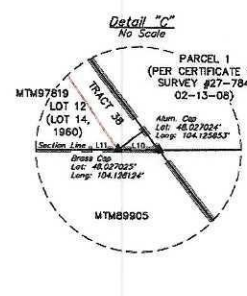
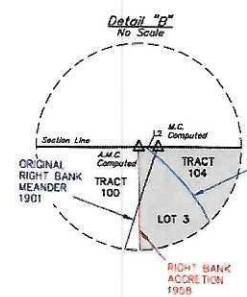
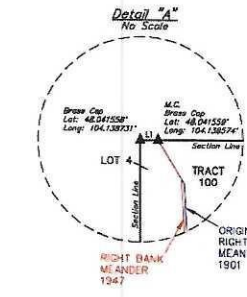
DATE: 06-16-20 E.C. (ADD FEDERAL MINERALS, ADD ENTRY & EXIT POINTS)

SCALE: 1" = 1000'

WELL LOCATION PLAT

- LEGEND:**
- = PROPOSED WELLHEAD
 - = TARGET BOTTOM HOLE
 - ◇ = FEDERAL MINERALS ENTRY POINT
 - = FEDERAL MINERALS EXIT POINT
 - ▣ = FEDERAL MINERALS
 - ▲ = SECTION CORNERS LOCATED
 - △ = SECTION CORNERS RE-ESTABLISHED (Not Set on Ground)
 - = UNRELEASED FEDERAL MINERALS (Original Cont. Lot 2 & 3 per 1901 C/O Plat and Tract 13 and Tract 114 as shown)

NOTE:
Distances referenced on plot to section lines are perpendicular.



LINE	DIRECTION	LENGTH
L1	S89°50'01\"	38.49'
L2	S89°50'01\"	58.73'
L3	S89°50'01\"	439.72'
L4	S89°50'32\"	974.40'
L5	S89°50'32\"	1216.77'
L6	S00°31'38\"	246.68'
L7	N00°20'36\"	816.07'
L8	N00°20'10\"	861.50'
L9	S89°51'15\"	2123.08'
L10	N89°56'54\"	86.62'
L11	S89°51'37\"	449.63'
L12	N00°4'08\"	1322.45'
L13	N00°4'08\"	1327.74'
L14	N00°20'10\"	655.40'

NAD 83 (SI) WELL LOCATIONS

LATITUDE	-47°49'41.76\"	(47°49'13.7)
LONGITUDE	-104°37'55.32\"	(104°12'28.5)
NAD 27 (SI) WELL LOCATIONS		
LATITUDE	-47°49'40.69\"	(47°49'13.7)
LONGITUDE	-104°37'41.54\"	(104°12'27.6)
STATE PLANE NAD 27 (MT, CENTRAL)		
N	141132.10	E 320385.38
STATE PLANE NAD 27 (MT, CENTRAL)		
N	34382.48	E 314176.43

NAD 83 (SI) ENTRY POINT "A"

LATITUDE	-48°00'18.00\"	(48°00'28.6)
LONGITUDE	-104°07'11.00\"	(104°12'52.5)
NAD 27 (SI) ENTRY POINT "A"		
LATITUDE	-48°00'18.00\"	(48°00'28.6)
LONGITUDE	-104°07'11.00\"	(104°12'52.5)
STATE PLANE NAD 83 (SI, CENTRAL)		
N	141042.41	E 320389.08
STATE PLANE NAD 27 (MT, CENTRAL)		
N	34296.36	E 314188.57

CERTIFICATE
THIS IS TO CERTIFY THAT THE ABOVE PLAT WAS PREPARED FROM FIELD SURVEY BY J. J. KRAKEN AND R. J. TUCKER REGISTERED SURVEYORS AND THAT THE SAME ARE TRUE AND CORRECT TO THE BEST OF MY KNOWLEDGE AND BELIEF.

J. J. Kraken
06-16-20
REGISTERED SURVEYOR
EXPIRES 06-16-2024

R. J. Tucker
06-16-20
REGISTERED SURVEYOR
EXPIRES 06-16-2024

REV: 5 06-16-20 E.C. (ADD FEDERAL MINERALS, ADD ENTRY & EXIT POINTS)

BASIS OF BEARINGS
BASIS OF BEARINGS IS A G.P.S. OBSERVATION

UELS, LLC
Corporate Office * 65 South 200 East
Vernal, UT 84078 * (435) 789-1017

KRAKEN OPERATING, LLC

ROWIN 17-5 #4H
NE 1/4 NW 1/4, SECTION 26, T26N, R59E, P.M.M.
RICHLAND COUNTY, MONTANA

SURVEYED BY: J.J. KRAKEN
DRAWN BY: S.K. TUCKER
DATE: 08-28-18
SCALE: 1" = 1000'

WELL LOCATION PLAT

Kraken Operating LLC
Permanent Spacing
ROWIN 17-5 #2H, #3H, #4H
T26N R59E Sections 17 & 8 & 5
Richland & Roosevelt Counties, Montana
25-083-22397-0000; 25-083-23398-0000; 25-083-23399-0000

Reserves and Economic Analysis

Reservoir Properties

Formation Type	Dolomitic Limestone
Vertical Thickness (ft)	38
Water Saturation	30%
Porosity	7%
Reservoir Temperature (deg F)	220
Oil Gravity (deg API)	42
Gas Gravity	0.95
GOR (SCF/STB)	1,000
Oil Formation Volume Factor	1.4 RB/STB

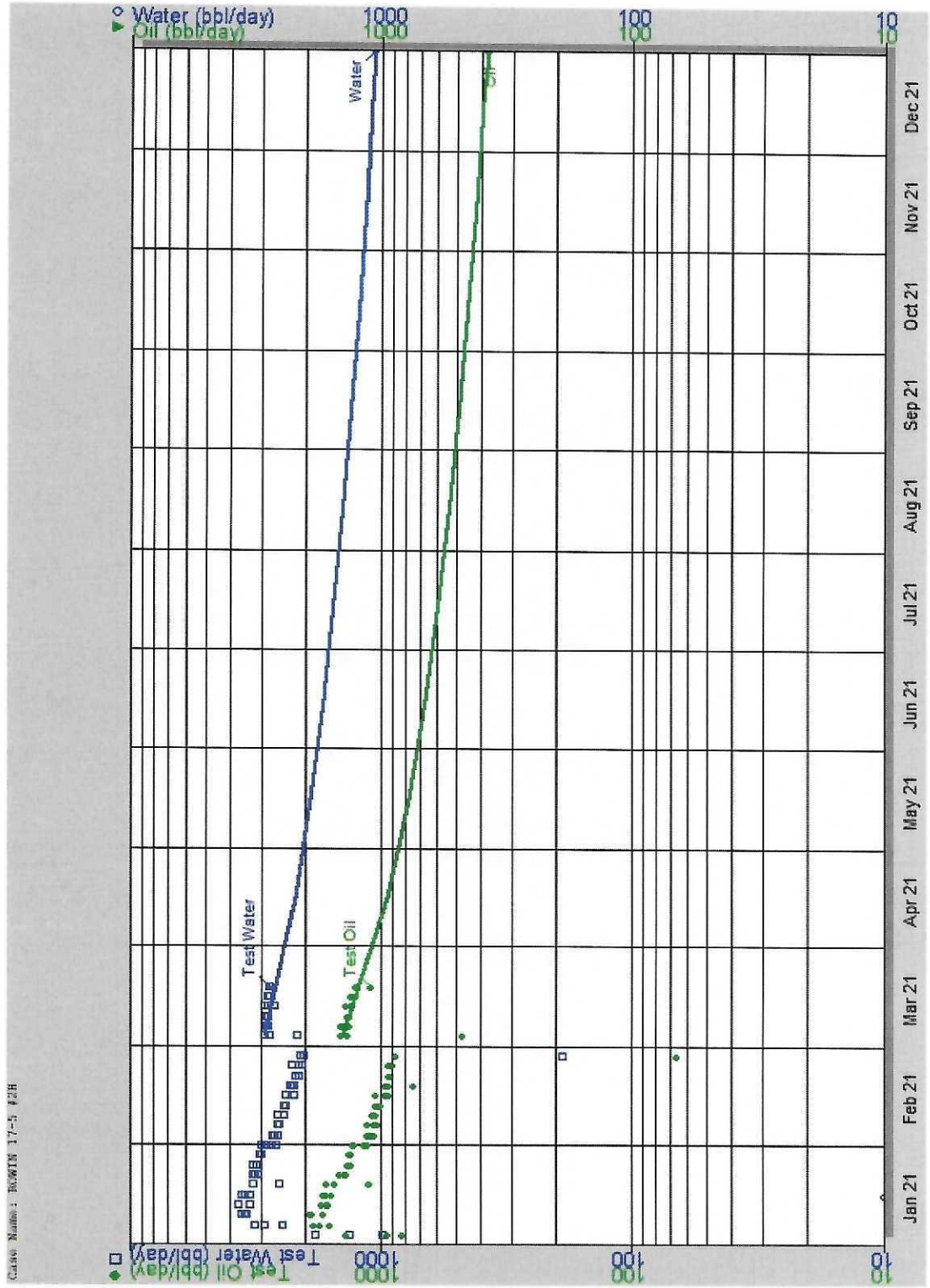
OOIP and Recovery

Spacing Unit Size (Ac)	1,920
OOIP (bbl/sec)	11,400,000
EUR - Decline Curve Analysis (bbl)	945,000
Oil Recovery Factor	4.1%

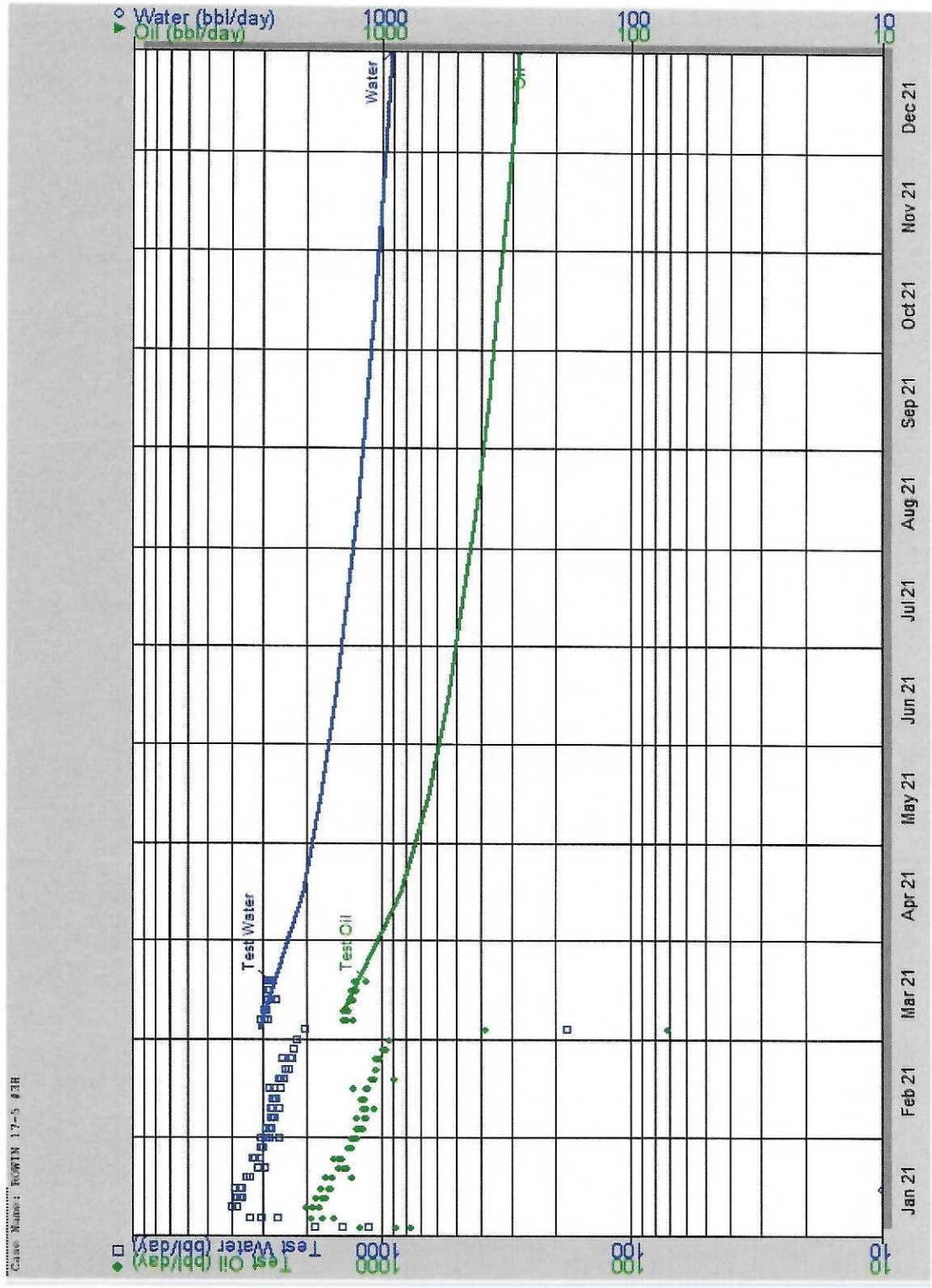
Economics

Product Pricing	3/17/2021 NYMEX Strip
Working Interest	100.00%
Net Revenue Interest	80.00%
Net Sales (M)	\$ 38,147
Operating Expense (M)	\$ 5,847
Severance Tax (M)	\$ 2,006
Net Income (M)	\$ 30,294
Net Investment (M)	\$ 7,590
Undiscounted Net/Investment	3.99

Kraken Operating LLC
 Production Profile
 Rowin 17-8 #2H
 T26N R59E Sections 5, 8 & 17
 Richland & Roosevelt County, Montana



Kraken Operating LLC
 Production Profile
 Rowin 17-8 #3H
 T26N R59E Sections 5, 8 & 17
 Richland & Roosevelt County, Montana



Kraken Operating LLC
 Production Profile
 Rowin 17-8 #4H
 T26N R59E Sections 5, 8 & 17
 Richland & Roosevelt County, Montana

